

Border Lite

PROJECT:

TYPE:

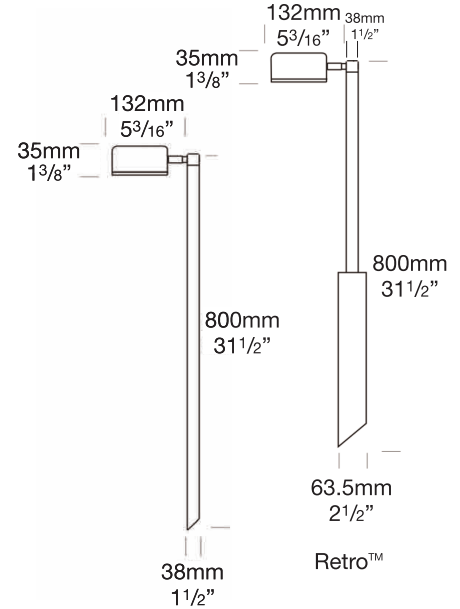
SOURCE:

NOTES:

PURELED SPECIFICATIONS

LED Chip	Cree XPG-3 Plug and Play field replaceable LED board
Luminaire Output	120 Lumens @ 700mA (2 watts), delivered from luminaire with unobstructed beam.
Lumens Per Watt	60 Lumens minimum @ 2 watts, delivered from luminaire with unobstructed beam
CRI (3000K)	90+
Colour Temperatures	2700K, 3000K, 4000K
Beam Angles	100 degrees
Ingress Protection	IP56/IP66

Warranty	Electronics = 5 years Body Cop/SS = 10 years Body Aluminium = 5 years
Standards	AS/NZS 61046 cUL 1838, 2108 CSA C22.2 No.250.7, No.250.0-08 CE



PRODUCT CONFIGURATION

Please fill in appropriate codes into boxes provided

Cat. No. BL/L

Luminaire	Power	Material/Finish	Beam	Colour	Accessories
<input type="text" value="BL/L"/>	<input type="text"/>	<input type="text"/>	<input type="text"/>	<input type="text"/>	<input type="text"/>
S 700mA Input, Series Wired 2W D3 12VAC Input, Parallel Wired 1W D7 12VAC Input, Parallel Wired 2W D24 24VDC Input, Parallel Wired R RETRO, 110/240V Input, Parallel Wired		ALUMINIUM EBK BLACK EBZ BRONZE EOGR OLIVE GREEN EWH WHITE EWB WHITE BIRCH EDG DARK GREY ESTAR SILVER STAR ECT CORTEN SS STAINLESS STEEL SBZ SOLID BRONZE	<input type="text" value="100"/> <input type="text" value="100°"/>	<input type="text" value="2"/> 2700K <input type="text" value="3"/> 3000K <input type="text" value="4"/> 4000K	<input type="text" value="FM"/> FLANGE MOUNT <input type="text" value="FM90"/> FLANGE MOUNT 90 <input type="text" value="LKN"/> LOCKING KNUCKLE <input type="text" value="LENSBLG"/> CLEAR LENS <input type="text" value="CJK"/> CABLE JOINT KIT

SERIES, REMOTE DRIVER REQUIRED:
Constant current driver Individual fixtures require 3VDC @ 700mA maximum

12VAC INTEGRAL DRIVER:
Hunza Buckbullet driver (included)
Input: 12VAC, 1 or 2 watt
Output: 3VDC @ D3=350mA, D7=700mA

110/240VAC RETRO DRIVER:
Input: 120/240vac, 2 watt (included)
Output: 3VDC @ 700mA constant current (non dimming)

24VDC DRIVER:
Input: 24VDC, 2 watt
Output: 3VDC @ 700mA constant current (non dimming)
Note: not for USA.

OTHER LAMP OPTIONS:
BL/H - G4 Halogen 12V Lamp
BL/GL - G4 LED Retrofit 12V Lamp (lamps vary by market - please refer to supplier for details)

[Click here for halogen specification sheet](#)

[Click here for 240v Remote Power Supply Guidance Charts](#)
[Click here for USA Remote Power Supply Guidance Charts](#)

LUMINAIRE CONSTRUCTION

CNC machined from one of the following metals:

Aluminium

Head: virgin high corrosion resistant CC401 low copper aluminium alloy, with chromate substrate and high UV resistant polyester powder coat.
 Pole: aluminium 38mm (1½") tube.
 Colours:
 Black, Bronze, Silver Star, White, White Birch, Olive Green, Dark Grey, Corten.

Copper/Solid Bronze

Head: cast from LG2 bronze.
 Pole: solid copper 38mm (1½") tube.

316 Stainless Steel

Head: cast from 316 stainless steel.
 Pole: 316 stainless steel 38mm (1½") tube.

Knuckles:

Aluminium and Copper luminaires - 360° rotation and 0-90° elevation, solid brass with anti rust spring.
 Stainless Steel luminaires - 360° rotation and 0-90° elevation, full stainless steel construction.

Lens:

3mm frosted shatter resistant glass.
 Lifetime Warranty.

Gaskets:

Silicone, iron impregnated 220°C (428°F).

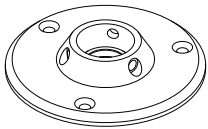
Mounting

The pole 800mm (31½") is directly mounted into the earth or concrete.
 Flange Mount option is available for hard surfaces.

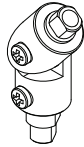
Luminaire Weight:

Low voltage
 Alum: 0.800kg (1lb 12oz)
 Cop/SBZ: 1.700kg (3lb 12oz)
 SS: 1.600kg (3lb 8oz)
 Retro™
 Alum: 2.000kg (4lb 7oz)
 Cop/SBZ: 3.400kg (7lb 8oz)
 SS: 3.150kg (6lb 15oz)

ACCESSORIES



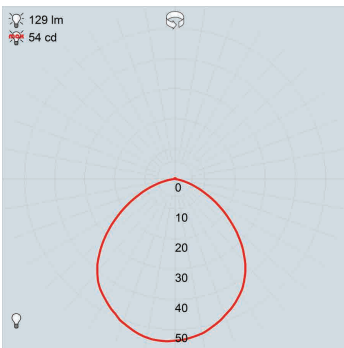
Flange Mount
 FM38 for low voltage
 FM90 for Retro



Locking Knuckle

BEAM ANGLES

IES files available for download: hunzalighting.com/downloads

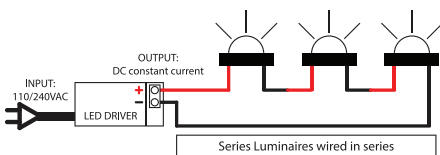


FWHM
 frosted lens

WIRING GUIDE

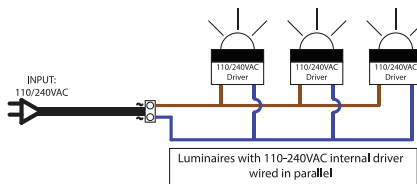
Available for download: hunzalighting.com/downloads

Series/remote driver

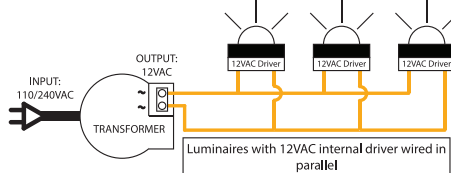


Diagrams are a guide only, wire colours and polarity may change depending on fixture and country

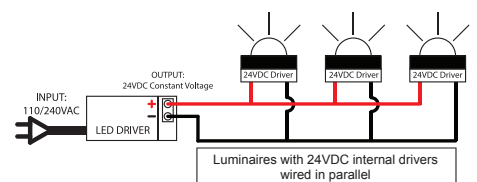
110/240v integral driver



12v integral driver



24vdc integral driver



Specifications may change without notification

Aug 2017