

POLE MOUNTS

MICRO:



Spike Spot Spike Glare Guard Diamond 180° Diamond 360°

MODUX ONE:



Halo Saber Wayfinder



RECESSED INGRADE/STEP

V1:



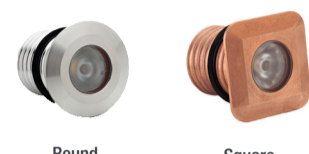
V1 Round With Springs V1 With Leaf Springs V1 With Leaf Springs and Canister V1 With Springs

MICRO:



Darklighter Spot Pathlight Steplight

MODUX ONE:



Round Square

MODUX TWO-FOUR:



SPOTS AND FLOODS

MODUX ONE:



Surface Mount Spot Spike Spot Spike Spot With Glare Guard Weighted Base Spot

MODUX TWO-FOUR:



Hanging Light Surface Mount Spot Spike Spot With Snoot Stake Spot Spike Spot Spike Spot With Glare Guard Weighted Base Spot

CEILING MOUNT

MODUX ONE:



Round Recessed Plug Square Recessed Plug

MODUX TWO-FOUR:

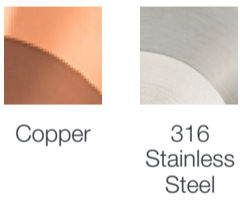


Round Recessed Plug Large Round Recessed Plug Square Recessed Plug Large Square Recessed Plug Wall Washer Recessed Plug



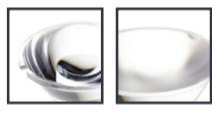
M4-RGBW

Finishes



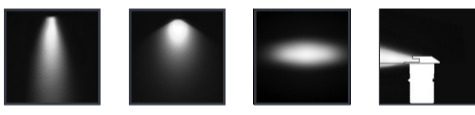
Copper 316 Stainless Steel

Lens Covers



Clear Frosted

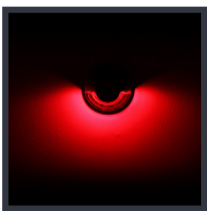
Beam



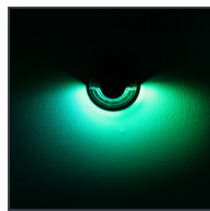
Spot 20° Medium 34° Oval 48°+24° (round flange only) Path & Step & Squarelight

The M4 RGBW is a mid-sized, contemporary LED luminaire which allows a DMX control system to produce any colour in the visible spectrum including pastels and various shades of white.

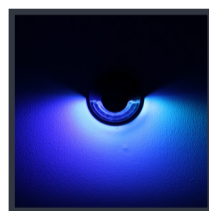
The modular design was developed to meet the challenge of delivering high quality practical accent lighting with maximum energy efficiency and a range of warm white to cool white colour temperatures can be achieved.



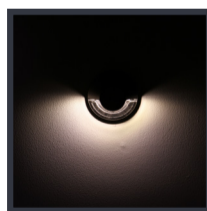
Red



Green



Blue



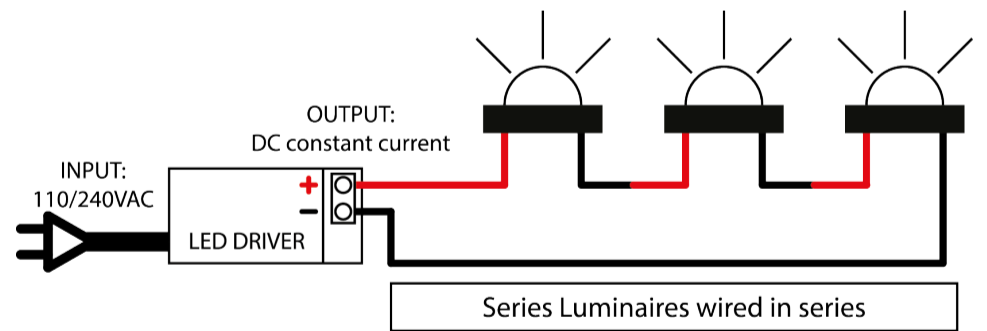
Neutral White

INSTALLATION

REMOTE DRIVER WIRED IN SERIES

Often referred to as series wiring, the current in a series circuit follows one path from start-to-finish with the positive of the second LED connected to the negative of the first.

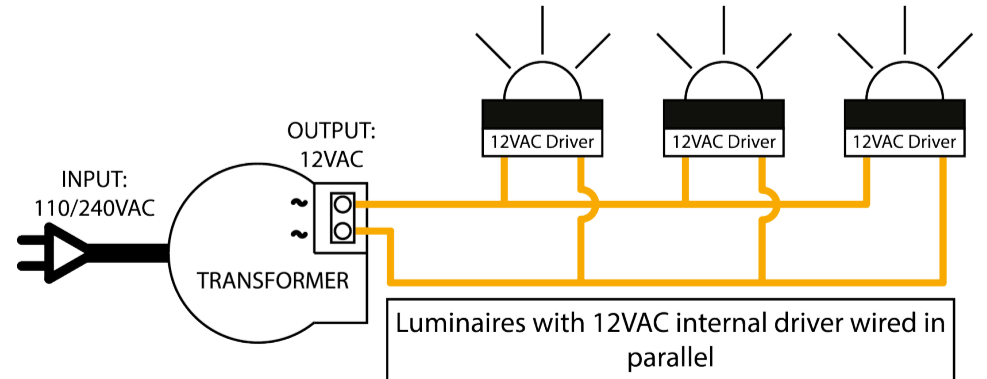
Series wiring allows a single driver to be mounted remotely, powering a number of series fittings. Often the most simplest of wiring schemes as each fitting is connected to the next in a daisy chain. It removes the need for a smaller 12 volt driver in each fitting.



INTEGRAL DRIVER + TRANSFORMER

In a parallel circuit all the positive connections are tied together and back to the positive output of the LED driver and all the negative connections are tied together and back to the negative output of the driver.

The integral driver option allows LuxR fittings to be wired in parallel to existing or new installations where a wire wound or magnetic transformer is being used.



5yr BODY WARRANTY ALUMINIUM



10yr BODY WARRANTY COPPER-STAINLESS STEEL



5yr ELECTRONICS WARRANTY



ECO



REPLACEABLE LED



MODULAR DESIGN



EASY INSTALL



LOW MAINTENANCE



NZ MADE

MODUX SERIES

- Ultra efficient LED light engine with industry leading Cree™ LEDs
- Plug-in LED board for simple upgrade or replacement
Modular construction for easy maintenance
- LEDShield series wiring electronic protection bypasses non-functioning LEDs
- CoolTouch engineering means the luminaire will never be too hot to touch
- Integral driver option for Modux 2 & Modux 4 to compliment 12 V AC magnetic transformer systems
- IP68 fully waterproof to 1 bar (10m) rating on the majority of products
- Dimmable
- Confidence body warranty of ten years
- Confidence electronics warranty of five years



LuxR
130 Felton Mathew Avenue
Saint Johns Auckland
New Zealand
PH: +64 9 528 9471

Feb 2022 V3 LU-AESG-IN

LuxR

LED BY DESIGN

MODUX SERIES

