

erluna

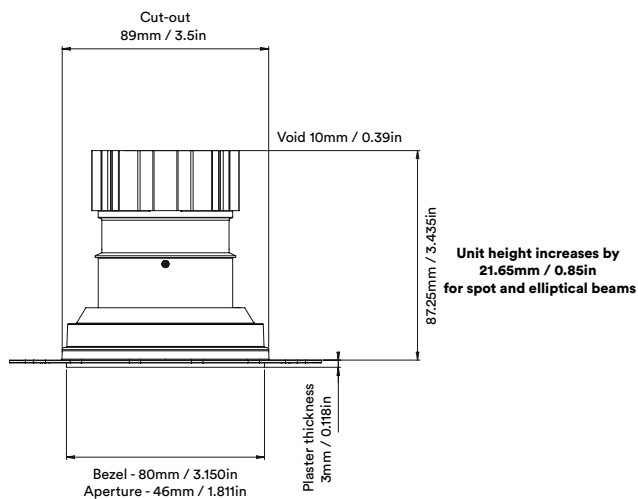
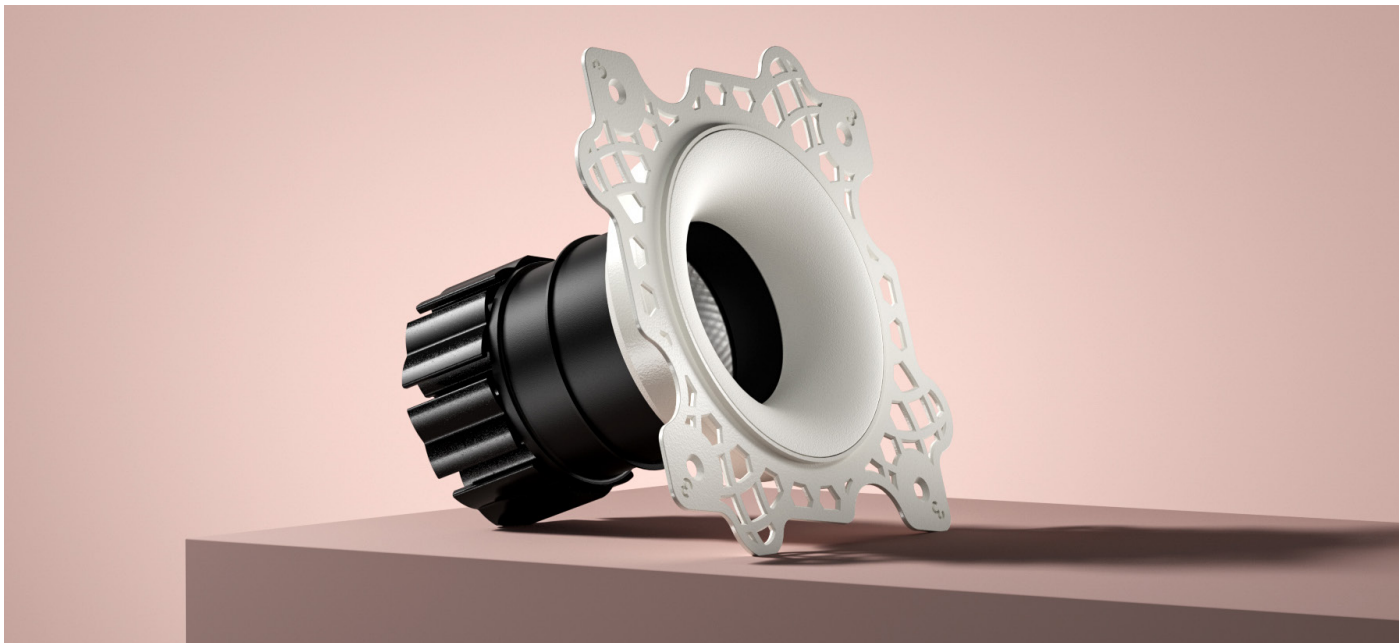
camber fixed
origin natural

circular product



camber fixed
origin natural

circular product



camber fixed origin natural

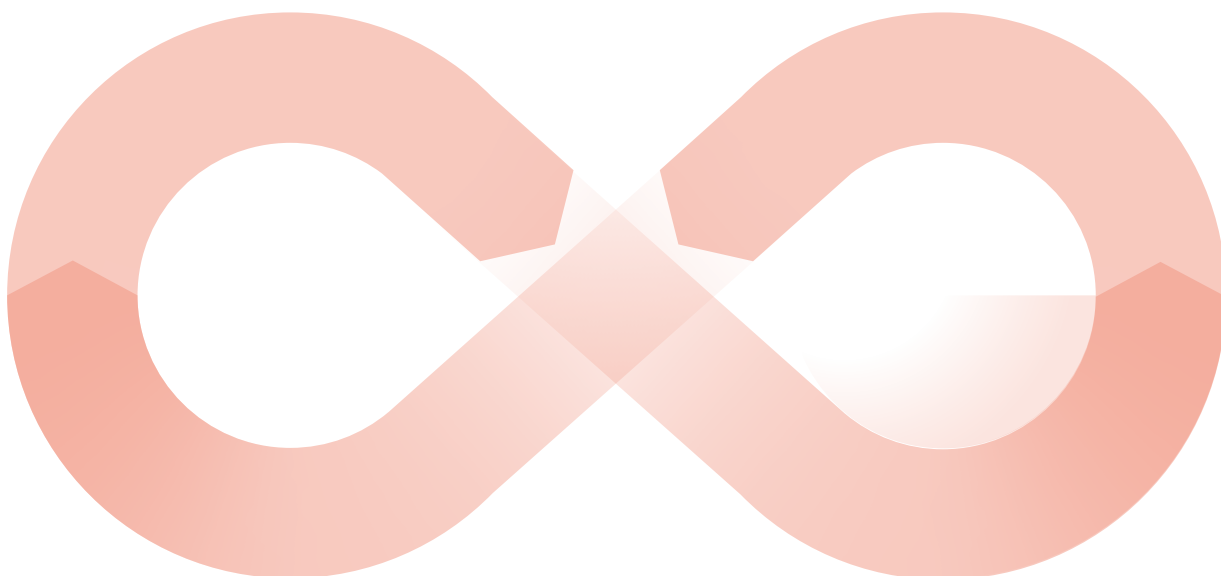
circular product

When an old Orluna light comes to the end of its life, or is faulty, instead of throwing it away, we kindly ask you to return it to us.

1

The fully repaired and tested product enters back into our stock –with a brand new warranty.

3



The 'new' light fitting is despatched to a new customer.

4

Once we've received the unwanted or faulty fitting, it's dismantled, repaired and renewed with a new LED and PCB.

2



camber fixed origin natural

circular product

		2700K									
		SPOT			SOFT				SPECIALITY		
LIGHT VALUES	Beam Width FWHM	Ultra 8°	Spot 10°	Narrow 14°	Medium 25°	Wide 40°	Flood 47°	Wash 54°	Crisp 35°	Elliptical 10x45°	Elliptical 20x40°
	Initial Lumens	533	953	1021	1021	1021	1021	1021	1021	953	953
	Engine Lumens	223	357	379	871	859	802	836	861	266	290
	Luminaire Lumens	195	351	379	509	528	509	529	577	210	252
	Engine Lm/W	29	29	33	76	75	70	73	76	22	24
	Luminaire Cd	7065	9911	5797	1847	1038	788	668	1547	768	1414
POWER	Voltage	36V	36V	34V				36V			
	Drive Current	180mA	300mA	300mA				300mA			
	Circuit Power (typ)	7.8W	12.2W	11.4W				12.2W			

		3000K									
		SPOT			SOFT				SPECIALITY		
LIGHT VALUES	Beam Width FWHM	Ultra 8°	Spot 10°	Narrow 14°	Medium 25°	Wide 40°	Flood 47°	Wash 54°	Crisp 35°	Elliptical 10x45°	Elliptical 20x40°
	Initial Lumens	637	984	1138	1138	1138	1138	1138	1138	935	935
	Engine Lumens	223	368	401	947	944	897	909	943	235	274
	Luminaire Lumens	215	359	401	566	596	586	605	646	198	251
	Engine Lm/W	29	30	35	83	83	79	80	83	19	22
	Luminaire Cd	8274	9755	6702	2004	1202	932	772	1738	744	1408
POWER	Voltage	36V	36V	34V				36V			
	Drive Current	180mA	300mA	300mA				300mA			
	Circuit Power (typ)	7.8W	12.2W	11.4W				12.2W			

Binning SDCM (Hot)	2
CRI (typ)(R9)	98 (99)
TM30 Rf Rg	Rf 97.7 Rg 100.4
Lifetime (TM21)	L90 B5 50,000hrs (inc driver)
Lifetime (Calculated)	L70 426,000hrs
Protocols	Mains Dim / DALI / 0-10V / Non-dim
Dim to Dark	0.1% Lux
Distance from LED	20m / 65' (series wiring)
Emergency	Emergency packs available

SPECIFICATION CODE

Engine type	Bezel	Colour Temp	Driver	Beam Width	Bezel Colour	Baffle Colour	Options
NL	-CBX-	27	M	S	-W-	BB	F 54 E
		27 / 2700K 30 / 3000K 40 / 4000K	M / Mains Dim D / DALI 0 / 0-10v N / Non Dim X / No Driver	U / Ultra S / Spot N / Narrow M / Medium W / Wide F / Flood H / Wash C / Crisp L / Elliptical Linear O / Elliptical Oval	W / White RAL 9010 D / White RAL 9003 E / White RAL 9016 B / Black RAL 9005 C / Other RAL G / Polished Brass J / Antique Bronze K / Brushed Chrome L / Polished Chrome I / Polished Copper Z / Other Metallic	BB / Black 9005 WB / White 9010 DB / White 9003 EB / White 9016 CB / Other RAL MB / Polished Brass JB / Antique Bronze KB / Brushed Chrome LB / Polished Chrome IB / Polished Copper ZB / Other Metallic	F / 60 min Fire Rated Plate 54 / IP54 65 / IP65 P / Sea & Spa IP65 E / 3hr Emergency H / Honeycomb N / Frosted Lens Z / LSZH Cable K / Click Connector

31/08/22

