

erluna

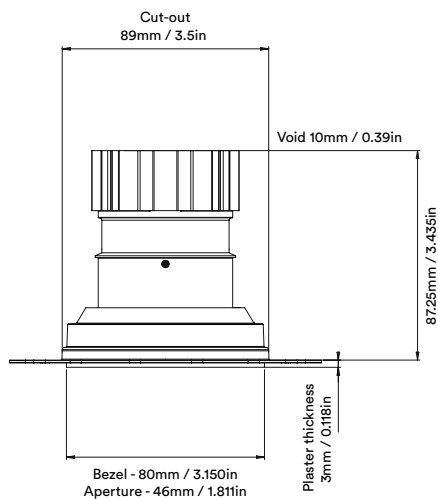
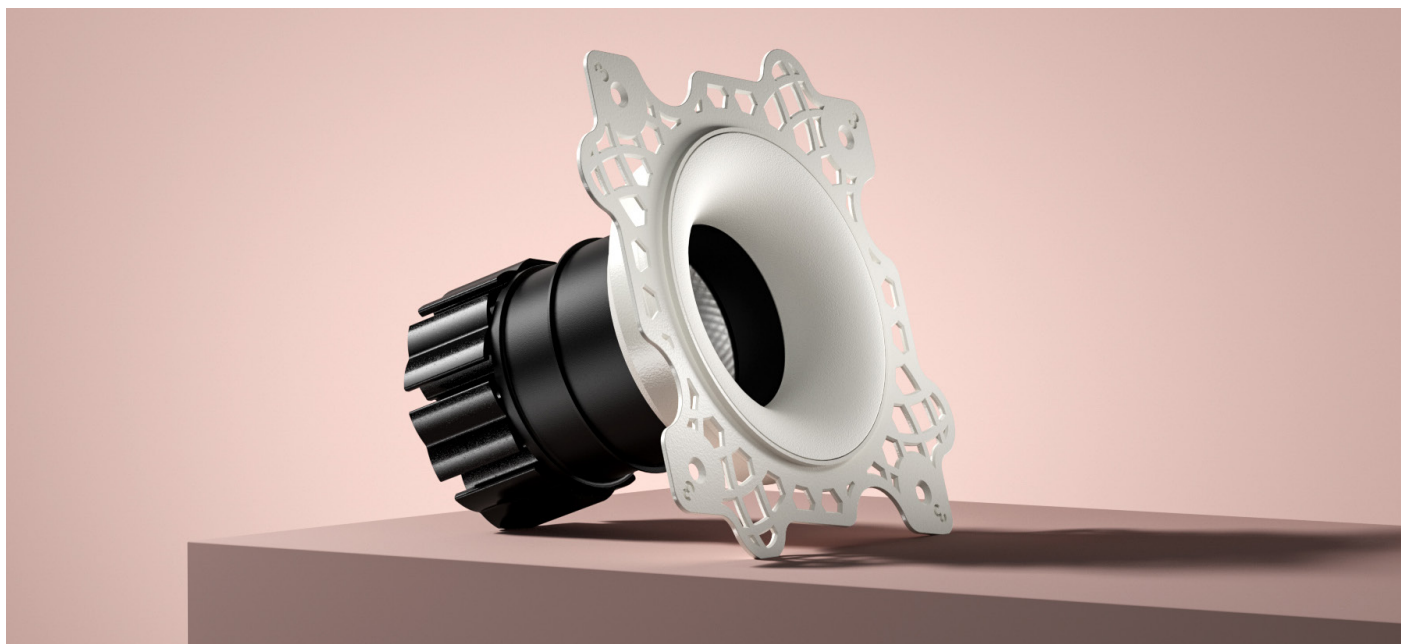
camber fixed
warm dim

circular product

  IP65
IP54  

camber fixed
warm dim

circular product



camber fixed warm dim

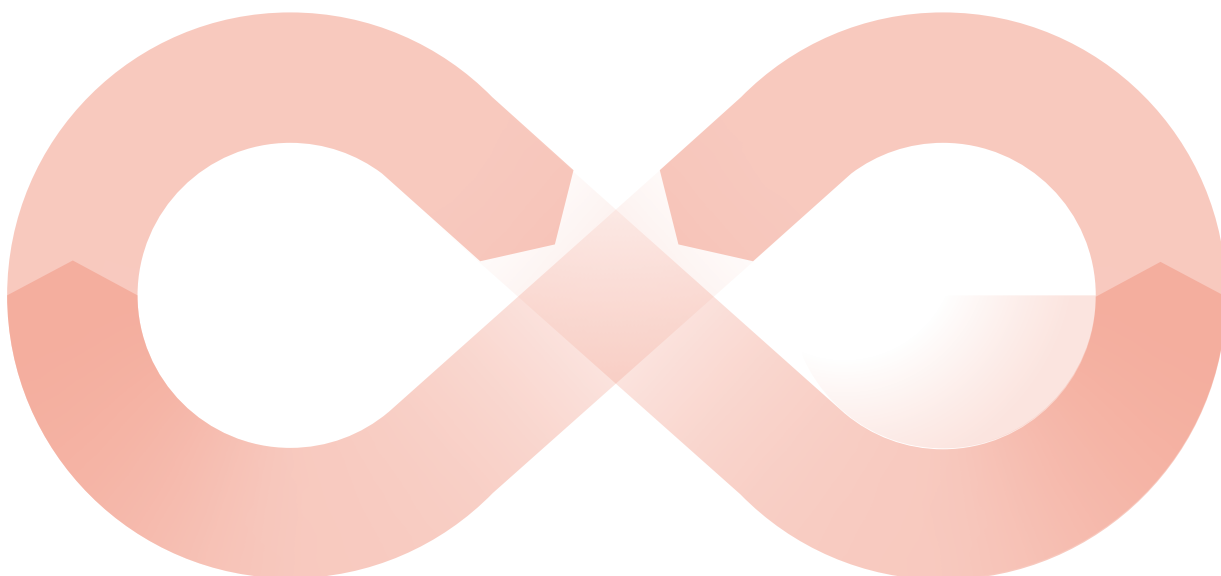
circular product

When an old Orluna light comes to the end of its life, or is faulty, instead of throwing it away, we kindly ask you to return it to us.

1

The fully repaired and tested product enters back into our stock –with a brand new warranty.

3



The 'new' light fitting is despatched to a new customer.

4

Once we've received the unwanted or faulty fitting, it's dismantled, repaired and renewed with a new LED and PCB.

2



camber fixed warm dim

circular product

		1800K - 3000K			
		SOFT			
		Medium	Wide	Flood	Wash
LIGHT VALUES	Beam Width FWHM	26°	42°	48°	54°
	Initial Lumens	1030	1030	1030	1030
	Engine Lumens	819	809	791	798
	Luminaire Lumens	515	506	455	496
	Engine Lm/W	71	70	68	69
	Luminaire Cd	1723	966	710	617
POWER	Voltage	34V			
	Drive Current	300mA			
	Circuit Power (typ)	11.6W			

DRIVER	Binning SDCM (Hot)	3
	CRI (typ)(R9)	99 (98)
	TM30 Rf Rg	Rf 94 Rg 100
	Lifetime (TM21)	L90 B5 50,000hrs (inc driver)
	Lifetime (Calculated)	L70 426,000hrs
DRIVER	Protocols	Mains Dim / DALI / 0-10V / Non-dim
	Dim to Dark	0.1% Lux
	Distance from LED	20m / 65' (series wiring)
	Emergency	Emergency packs available

SPECIFICATION CODE

Engine type	Bezel	Colour Temp	Driver	Beam Width	Bezel Colour	Baffle Colour	Options
WD	-CBX-	WD	M	M	-W-	BB	F 54 E
		WD / Warm Dim	M / Mains Dim D / DALI 0 / 0-10v X / No Driver	M / Medium W / Wide F / Flood H / Wash	W / White RAL 9010 D / White RAL 9003 E / White RAL 9016 B / Black RAL 9005 C / Other RAL G / Polished Brass J / Antique Bronze K / Brushed Chrome L / Polished Chrome I / Polished Copper Z / Other Metallic	BB / Black 9005 WB / White 9010 DB / White 9003 EB / White 9016 CB / Other RAL MB / Polished Brass JB / Antique Bronze KB / Brushed Chrome LB / Polished Chrome IB / Polished Copper ZB / Other Metallic	F / 60 min Fire Rated Plate 54 / IP54 65 / IP65 P / Sea & Spa IP65 E / 3hr Emergency H / Honeycomb N / Frosted Lens Z / LSZH Cable K / Click Connector

31/08/22

